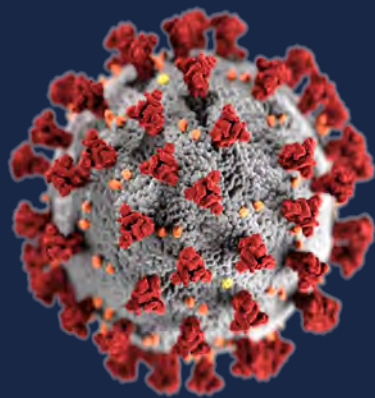




**Paladin  
Risk Solutions**



# **COVID-19**

**INTELLIGENCE REPORT**

**Situational Awareness for:**  
Stakeholders and Decision Makers

**08 September 2020**



## 1. TABLE OF CONTENTS

- 2. INSIGHT and SITUATIONAL AWARENESS →Click here to access previous featured reports ..... 2
- 3. COVID-19 IN CANADA..... 3
- 3.1. CANADA NEWS..... 5
- 4. COVID-19 IN USA ..... 5
- 4.1. USA NEWS ..... 6
- 5. GLOBAL COMMON OPERATING PICTURE ..... 7
- 6. LAW ENFORCEMENT AND CRIME REPORTING ..... 8
- 7. TRAVEL..... 8
- 8. SOLUTION AND RESPONSE EFFORTS..... 8
- 9. MEDICAL INFORMATION ..... 9
- 10. INTERNATIONAL DATA ..... 9
- 11. ECONOMIC IMPACT ..... 9
- 12. CYBER NEWS ..... 9
- 13. APPENDIX A – Canadian Tracking Information..... 10
- 14. APPENDIX B – Phase 1 to 3: Progression on Managing COVID-19 Pandemic ..... 11

|        | Confirmed         | Deaths  | Recovered         | Active          |
|--------|-------------------|---------|-------------------|-----------------|
| Canada | 132,517<br>(↑375) | 9,146   | 116,697<br>(↑238) | 6,674<br>(↑137) |
| USA    | 6,488,728         | 193,598 | 3,759,134         | 2,535,996       |
| Global | 27,557,441        | 897,933 | 19,654,888        | 7,004,620       |

### DISCLAIMER

*This report is confidential and is intended to be used solely by the client for whom this report was prepared and to whom it is addressed for information purposes only and for no other purpose, except as may be expressly stated herein. This report may not be copied, reproduced, disseminated, distributed or otherwise made available to any third party, in whole or in part, without the express written consent of Paladin Risk Solutions Inc. which consent may be withheld for any reason. In preparing this report, Paladin Risk Solutions Inc. has used its professional care and diligence and has endeavored to include in this report and to base its analysis upon information that it believes to be relevant to the purposes of this report; however, no representation or warranty, express or implied, is made by Paladin Risk Solutions Inc. as to the accuracy or completeness of the information included in this report.*



## 2. INSIGHT and SITUATIONAL AWARENESS

[→Click here to access previous featured reports](#)

Despite strict travel restrictions which have been put in place by the Canadian government since late March, over four million people have entered Canada. Those in essential industries such as health and transport, can freely enter Canada without requiring a self-isolation period. It also allowed some international students to enter Canada. Furthermore, citizens and permanent residents may leave and come back to Canada as they please but must self-isolate for fourteen days upon their return. In June, Canada opened travel restrictions, allowing immediate family of Canadians to enter, as long as they plan to stay for longer than fifteen days. This extension allows family members living outside of the country to come and see or assist their Canadian family members.

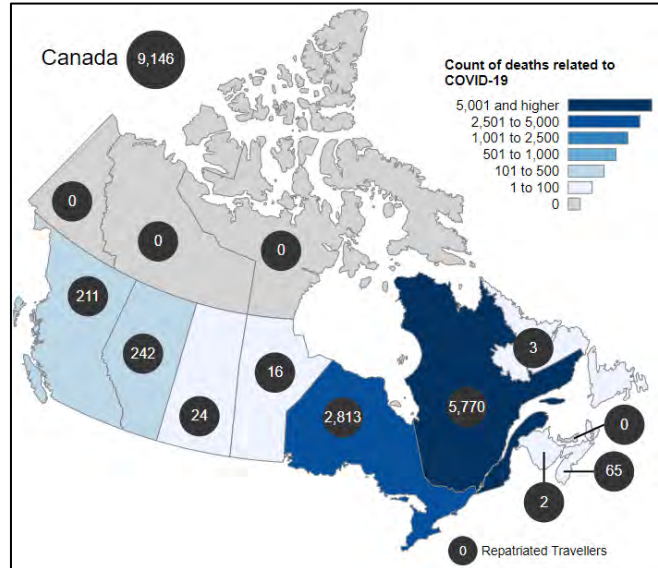
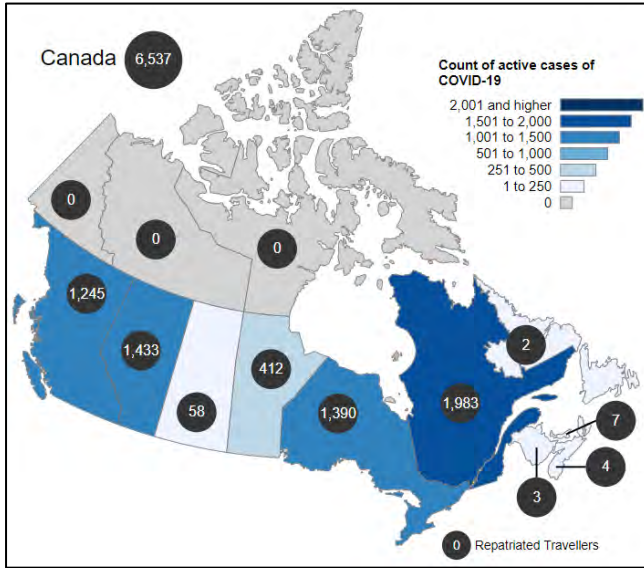
Since March 23, the Canadian Border Services Agency (CBSA) has advised that about 4.4 million people have entered Canada. When comparing it to travel before COVID-19, there is an overall decline of 88% from the 2019 numbers. Since that date, CBSA has also denied entry to about 18,000 people, via land or air, who declared their visit to be non-essential, such as tourism or shopping. By land, the majority of those entering Canada are commercial truckers, who are considered essential workers. Some American travellers have utilized the Alaska loophole to enter Canada, stating they are travelling to that American state but at least nine fines of CDN\$1,200 have been issued to Americans who stopped in Banff instead of heading straight to Alaska. A couple of months ago, CBSA mandated those travelling to Alaska to display a tag on their car which states the purpose of their travel and must inform CBSA when they leave Canada. One American was fined not only once, but again the next day, and is facing a criminal charge of breaching Canada's Quarantine Act. The maximum penalties include six months in jail and a fine of up to \$750,000. Fines can also be issued by the RCMP and local police forces ranging from \$265 to \$1,000.

Canada may have rules against non-essential travel to the country, but it does not stop Canadians from vacationing in countries that do not have bans. Those that travel must self-isolate upon return, and COVID-19 cases associated with international travel have decreased since March. In February, almost half of cases were associated with travel, going down to approximately 3% at the beginning of August. Recent reports suggest that some international travellers are not following the fourteen-day self-isolation rule, troubling for authorities as flights have arrived in Canada with individuals who have later tested positive for the virus.

The Canadian-USA border has seen renewals of its closures, with many expecting closures to last until at least the end of the year. Canada is now looking into the idea of testing travellers upon arrival in order to replace the self-isolation requirement for travellers, although this is not practical as some may not experience symptoms until after they return.



3. COVID-19 IN CANADA



Source: <https://www.canada.ca/en/public-health/services/diseases/2019-novel-coronavirus-infection.html>

| Prov.        | Total Confirmed       | Total Deaths | Total Recovered       | Total Active        |
|--------------|-----------------------|--------------|-----------------------|---------------------|
| <b>Total</b> | <b>132,517</b> (↑375) | <b>9,146</b> | <b>116,697</b> (↑238) | <b>6,674</b> (↑137) |
| BC           | 6,162                 | 211          | 4,706                 | 1,245               |
| ON           | 43,536 (↑375)         | 2,813        | 39,196 (↑238)         | 1,527 (↑137)        |
| QC           | 63,713                | 5,770        | 55,960                | 1,983               |
| AB           | 14,474                | 242          | 12,799                | 1,433               |
| MB           | 1,338                 | 16           | 910                   | 412                 |
| NB           | 192                   | 2            | 187                   | 3                   |
| SK           | 1,662                 | 24           | 1,580                 | 58                  |
| PEI          | 51                    | 0            | 44                    | 7                   |
| NL           | 270                   | 3            | 265                   | 2                   |
| NS           | 1,086                 | 65           | 1,017                 | 4                   |
| YT           | 15                    | 0            | 15                    | 0                   |
| NT           | 5                     | 0            | 5                     | 0                   |
| NU           | 0                     | 0            | 0                     | 0                   |



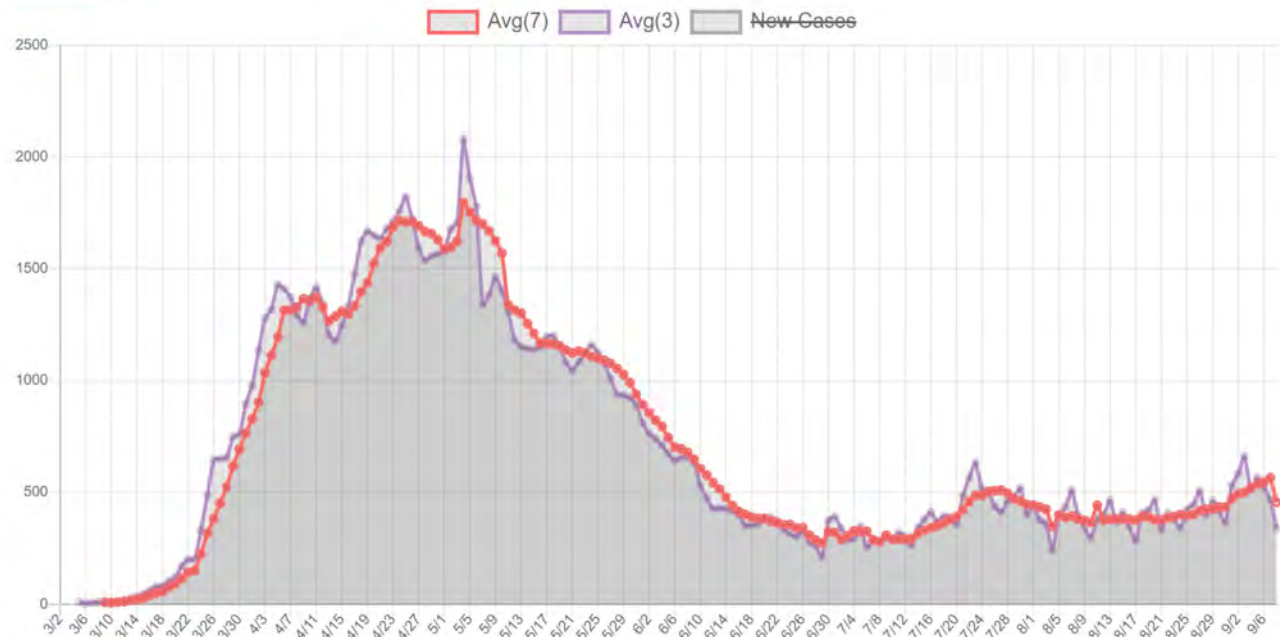
| Prov.        | Total Test                 | Total Waiting | Total Hosp | Total ICU |
|--------------|----------------------------|---------------|------------|-----------|
| <b>Total</b> | <b>6,251,468 (+44,654)</b> | -             | -          | -         |
| BC           | 386,121                    | -             | 31         | 12        |
| ON           | 3,171,062 (+44654)         | 8357 (-9341)  | 54 (+2)    | 17 (+2)   |
| QC           | 1,176,783                  | -             | 105        | 18        |
| AB           | 1,005,001                  | -             | 47         | 9         |
| MB           | 146,064                    | -             | 13         | 3         |
| NB           | 64,188                     | -             | 0          | 0         |
| SK           | 150,737                    | -             | 1          | 1         |
| PEI          | 27,365                     | 44            | -          | -         |
| NL           | 33,483                     | -             | 0          | 0         |
| NS           | 81,321                     | -             | 0          | 0         |
| YT           | 2,720                      | 61            | -          | -         |
| NT           | 4,166                      | 154           | 0          | 0         |
| NU           | 2,457                      | 417           | 0          | 0         |

### New Cases Analysis by Date

\*Clickable & Scrollable Graph  
As of 9/8/2020, 8:18 AM (PDT)  
New Cases: 375

\*Toggle Switch (All / Last 21 days)

All



Source: <https://www.covid-19canada.com>

### 3.1. CANADA NEWS

- [Tam urges caution as daily cases of COVID-19 rise 25 per cent in last week](#)
- [Canada added 246,000 jobs in August, but employment still 1 million short of pre-COVID level](#)
- [Is your child going back to school? Here's what to ask about COVID-19 safety](#)
- [Authorities misinterpreting COVID-19 trial data with 'disastrous' results, Canadian researchers say](#)
- [5 more southern Alberta schools report COVID-19 cases](#)
- [What the level of COVID-19 immunity in Canada could mean for the vaccine hunt](#)

### 4. COVID-19 IN USA





United States

Coronavirus Cases:

6,490,632

Deaths:

193,648

Recovered:

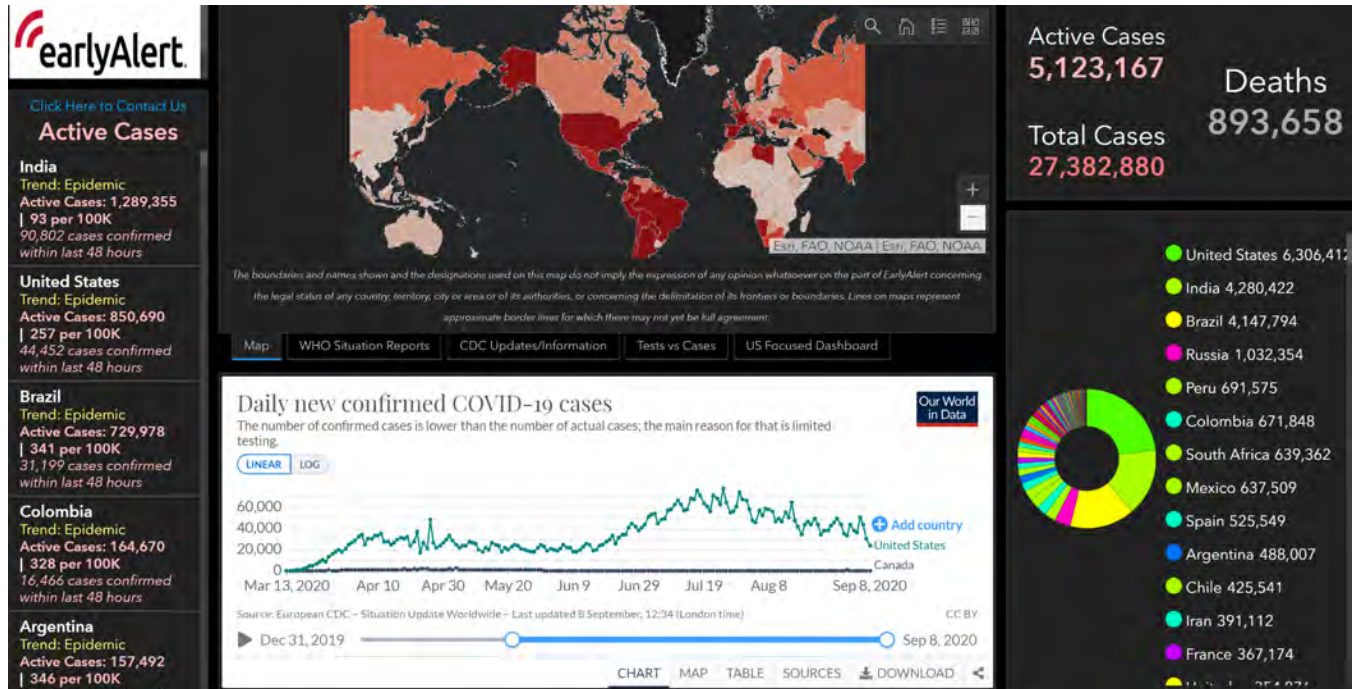
3,759,134

| #  | USA State      | Total Cases | New Cases | Total Deaths | New Deaths | Total Recovered | Active Cases | Tot Cases/ 1M pop | Deaths/ 1M pop | Total Tests | Tests/ 1M pop | Population |
|----|----------------|-------------|-----------|--------------|------------|-----------------|--------------|-------------------|----------------|-------------|---------------|------------|
|    | USA Total      | 6,490,632   | +5,057    | 193,648      | +114       | 3,759,134       | 2,537,850    | 19,609            | 585            | 88,113,552  | 266,202       |            |
| 1  | California     | 741,486     |           | 13,763       |            | 353,161         | 374,562      | 18,766            | 348            | 12,158,292  | 307,710       | 39,512,223 |
| 2  | Texas          | 668,787     |           | 13,819       |            | 568,590         | 86,378       | 23,065            | 477            | 5,753,842   | 198,437       | 28,995,881 |
| 3  | Florida        | 650,092     | +1,823    | 11,919       | +48        | 105,123         | 533,050      | 30,268            | 555            | 4,823,952   | 224,602       | 21,477,737 |
| 4  | New York       | 472,472     |           | 33,091       |            | 377,378         | 62,003       | 24,287            | 1,701          | 8,855,109   | 455,192       | 19,453,561 |
| 5  | Georgia        | 283,807     |           | 6,044        |            | 54,821          | 222,942      | 26,730            | 569            | 2,773,293   | 261,202       | 10,617,423 |
| 6  | Illinois       | 252,889     |           | 8,398        |            | 196,296         | 48,195       | 19,957            | 663            | 4,447,347   | 350,964       | 12,671,821 |
| 7  | Arizona        | 206,045     | +81       | 5,221        | +2         | 31,866          | 168,958      | 28,308            | 717            | 1,534,740   | 210,853       | 7,278,717  |
| 8  | New Jersey     | 197,859     |           | 16,113       |            | 164,104         | 17,642       | 22,276            | 1,814          | 3,054,528   | 343,894       | 8,882,190  |
| 9  | North Carolina | 178,417     |           | 2,928        |            | 156,652         | 18,837       | 17,011            | 279            | 2,459,582   | 234,512       | 10,488,084 |
| 10 | Tennessee      | 165,109     |           | 1,869        |            | 146,213         | 17,027       | 24,177            | 274            | 2,340,380   | 342,703       | 6,829,174  |
| 11 | Louisiana      | 153,177     |           | 5,105        |            | 134,432         | 13,640       | 32,950            | 1,098          | 1,963,333   | 422,332       | 4,648,794  |
| 12 | Pennsylvania   | 144,658     |           | 7,874        |            | 114,687         | 22,097       | 11,300            | 615            | 1,752,679   | 136,907       | 12,801,989 |
| 13 | Alabama        | 133,606     | +633      | 2,277        | +1         | 51,154          | 80,175       | 27,249            | 464            | 1,031,688   | 210,412       | 4,903,185  |
| 14 | Ohio           | 131,419     |           | 4,280        |            | 109,248         | 17,891       | 11,243            | 366            | 2,419,192   | 206,961       | 11,689,100 |
| 15 | Virginia       | 128,407     | +836      | 2,686        | +2         | 15,742          | 109,979      | 15,044            | 315            | 1,809,545   | 212,002       | 8,535,519  |
| 16 | South Carolina | 125,607     |           | 2,907        |            | 51,431          | 71,269       | 24,396            | 565            | 1,075,129   | 208,815       | 5,148,714  |
| 17 | Massachusetts  | 122,791     |           | 9,133        |            | 105,769         | 7,889        | 17,815            | 1,325          | 2,075,770   | 301,163       | 6,892,503  |
| 18 | Michigan       | 118,403     |           | 6,810        |            | 80,678          | 30,915       | 11,856            | 682            | 3,260,767   | 326,506       | 9,986,857  |
| 19 | Maryland       | 113,239     | +356      | 3,807        | +3         | 7,142           | 102,290      | 18,731            | 630            | 2,099,562   | 347,283       | 6,045,680  |
| 20 | Indiana        | 100,394     |           | 3,368        |            | 77,015          | 20,011       | 14,912            | 500            | 1,551,731   | 230,493       | 6,732,219  |

4.1. USA NEWS

- [Sweltering crowds throng to beaches for Labor Day weekend, despite pandemic worries](#)
- [Trump touts big job gains, says the U.S. is 'rounding the corner' on the coronavirus](#)
- [U.S. CDC reports 188,513 deaths from coronavirus](#)
- [COVID-19 cluster linked to U.S. university frat party with over 100 attendees](#)
- [Biden, Trump battle over prospect of coronavirus vaccine delivered before Election Day](#)
- [How Your Labor Day Blast Could Make Pandemic Life Worse in the Fall](#)
- ['Worrying Signs' of Falling Trust in Coronavirus Vaccines, as 79 Percent Would Not Get Shot Right Away](#)
- [New York will ramp up testing corpses for COVID-19 and the flu to make sure death data is accurate](#)

**5. GLOBAL COMMON OPERATING PICTURE**







| #  | Country, Other               | Total Cases | New Cases | Total Deaths | New Deaths | Total Recovered | Active Cases | Serious, Critical | Tot Cases/ 1M pop | Deaths/ 1M pop | Total Tests | Tests/ 1M pop | Population    |
|----|------------------------------|-------------|-----------|--------------|------------|-----------------|--------------|-------------------|-------------------|----------------|-------------|---------------|---------------|
|    | World                        | 27,561,639  | +80,681   | 897,989      | +1,433     | 19,655,792      | 7,007,858    | 60,281            | 3,536             | 115.2          |             |               |               |
| 1  | <a href="#">USA</a>          | 6,490,981   | +5,406    | 193,652      | +118       | 3,759,134       | 2,538,195    | 14,582            | 19,588            | 584            | 88,113,552  | 265,909       | 331,367,517   |
| 2  | <a href="#">India</a>        | 4,313,129   | +35,545   | 73,105       | +289       | 3,352,316       | 887,708      | 8,944             | 3,120             | 53             | 50,650,128  | 36,636        | 1,382,530,286 |
| 3  | <a href="#">Brazil</a>       | 4,147,794   |           | 127,001      |            | 3,355,564       | 665,229      | 8,318             | 19,488            | 597            | 14,408,116  | 67,694        | 212,842,596   |
| 4  | <a href="#">Russia</a>       | 1,035,789   | +5,099    | 17,993       | +122       | 850,049         | 167,747      | 2,300             | 7,097             | 123            | 38,758,184  | 265,565       | 145,946,376   |
| 5  | <a href="#">Peru</a>         | 691,575     |           | 29,976       |            | 522,251         | 139,348      | 1,488             | 20,921            | 907            | 3,386,625   | 102,450       | 33,056,487    |
| 6  | <a href="#">Colombia</a>     | 671,848     |           | 21,615       |            | 529,279         | 120,954      | 863               | 13,178            | 424            | 2,964,722   | 58,150        | 50,983,652    |
| 7  | <a href="#">South Africa</a> | 639,362     |           | 15,004       |            | 566,555         | 57,803       | 539               | 10,755            | 252            | 3,808,949   | 64,073        | 59,446,940    |
| 8  | <a href="#">Mexico</a>       | 637,509     | +3,486    | 67,781       | +223       | 446,715         | 123,013      | 2,836             | 4,935             | 525            | 1,435,703   | 11,114        | 129,184,522   |
| 9  | <a href="#">Spain</a>        | 525,549     |           | 29,516       |            | N/A             | N/A          | 1,034             | 11,240            | 631            | 9,987,326   | 213,595       | 46,758,226    |
| 10 | <a href="#">Argentina</a>    | 488,007     |           | 10,179       | +50        | 366,590         | 111,238      | 2,698             | 10,779            | 225            | 1,412,149   | 31,192        | 45,273,109    |
| 11 | <a href="#">Chile</a>        | 424,274     |           | 11,652       |            | 395,717         | 16,905       | 930               | 22,159            | 609            | 2,641,589   | 137,965       | 19,146,844    |
| 12 | <a href="#">Iran</a>         | 391,112     | +2,302    | 22,542       | +132       | 337,414         | 31,156       | 3,713             | 4,645             | 268            | 3,431,646   | 40,760        | 84,191,615    |
| 13 | <a href="#">UK</a>           | 350,100     |           | 41,554       |            | N/A             | N/A          | 69                | 5,152             | 612            | 17,619,897  | 259,295       | 67,953,144    |
| 14 | <a href="#">Bangladesh</a>   | 329,251     | +1,892    | 4,552        | +36        | 227,809         | 96,890       |                   | 1,996             | 28             | 1,659,697   | 10,059        | 164,994,746   |
| 15 | <a href="#">France</a>       | 328,980     |           | 30,726       |            | 87,836          | 210,418      | 537               | 5,038             | 471            | 8,500,000   | 130,167       | 65,300,897    |
| 16 | <a href="#">Saudi Arabia</a> | 322,237     | +781      | 4,137        | +30        | 298,246         | 19,854       | 1,430             | 9,230             | 118            | 5,406,136   | 154,844       | 34,913,354    |
| 17 | <a href="#">Pakistan</a>     | 299,233     | +330      | 6,350        | +5         | 286,157         | 6,726        | 606               | 1,350             | 29             | 2,802,210   | 12,641        | 221,671,477   |
| 18 | <a href="#">Turkey</a>       | 281,509     |           | 6,730        |            | 252,152         | 22,627       | 1,118             | 3,331             | 80             | 7,883,464   | 93,287        | 84,507,634    |
| 19 | <a href="#">Italy</a>        | 280,153     | +1,370    | 35,563       | +10        | 210,801         | 33,789       | 143               | 4,635             | 588            | 9,364,213   | 154,922       | 60,444,825    |
| 20 | <a href="#">Iraq</a>         | 264,684     |           | 7,589        |            | 202,859         | 54,236       | 534               | 6,554             | 188            | 1,718,157   | 42,544        | 40,385,131    |

6. LAW ENFORCEMENT AND CRIME REPORTING

- [Sherbrooke police crack down on bar patrons allegedly flouting coronavirus rules](#)
- [Portland police declare riot on 100th straight night of protests](#)
- [Masks mandatory in Winnipeg courthouse after employee tests positive for COVID-19](#)

7. TRAVEL

- [StatsCan surveying tourism trends again after stopping due to COVID-19](#)
- [More flights added to BCCDC's COVID-19 exposure list](#)
- [United launches interactive map for Covid-19 restrictions](#)

8. SOLUTION AND RESPONSE EFFORTS

- [World must be better prepared for next pandemic, says WHO boss](#)
- [China shows off COVID-19 vaccines for first time](#)
- [COVID-19 case count linked to Toronto-area wedding climbs to 23](#)
- [It is highly unlikely that food is a source of COVID-19 contamination, experts say](#)



## 9. MEDICAL INFORMATION

- [Developing coronavirus treatments 'extremely important,' experts say](#)
- [The global search for the COVID-19 vaccine will likely produce more than one winner](#)
- ['Long Covid' patients need treatment program, doctors say](#)
- [COVID-19 caused substantial disruptions to essential health services in most countries](#)

## 10. INTERNATIONAL DATA

- [India now second worst-hit country by virus amid economic pain](#)
- [Coronavirus spikes in Spain, France and U.K. raise specter of second wave](#)
- [Brazil, Mexico report hundreds of new COVID-19 fatalities](#)
- [German universities juggle health and learning in coronavirus pandemic](#)
- [Spain surpasses 500,000 virus cases: health ministry](#)

## 11. ECONOMIC IMPACT

- [Which countries have protected both health and the economy in the pandemic?](#)
- [China is in for 'a tough time' as U.S. targets tech sector, expert says](#)
- [Views of the economy have turned sharply negative in many countries amid COVID-19](#)
- ['We need recession-proof jobs': Dozens of Calgary unions calling for change](#)

## 12. CYBER NEWS

- [Cybercrime surges in Hong Kong as Covid-19 work-from-home arrangements leave people 'vulnerable' to fraudsters](#)
- ['People are worried.' Some schools in COVID hotspots seeing fewer students opting for in-person classes](#)
- [Nigerian teacher can 'teach the whole world' thanks to Instagram, WhatsApp](#)

End Report

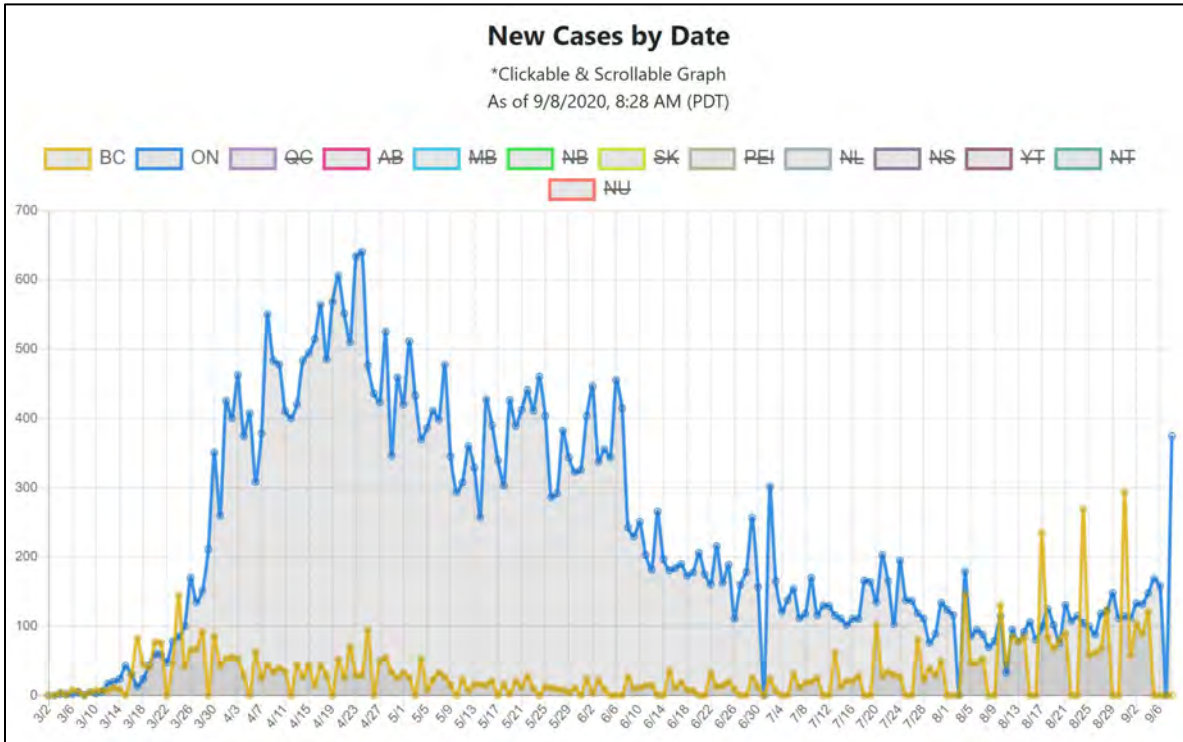
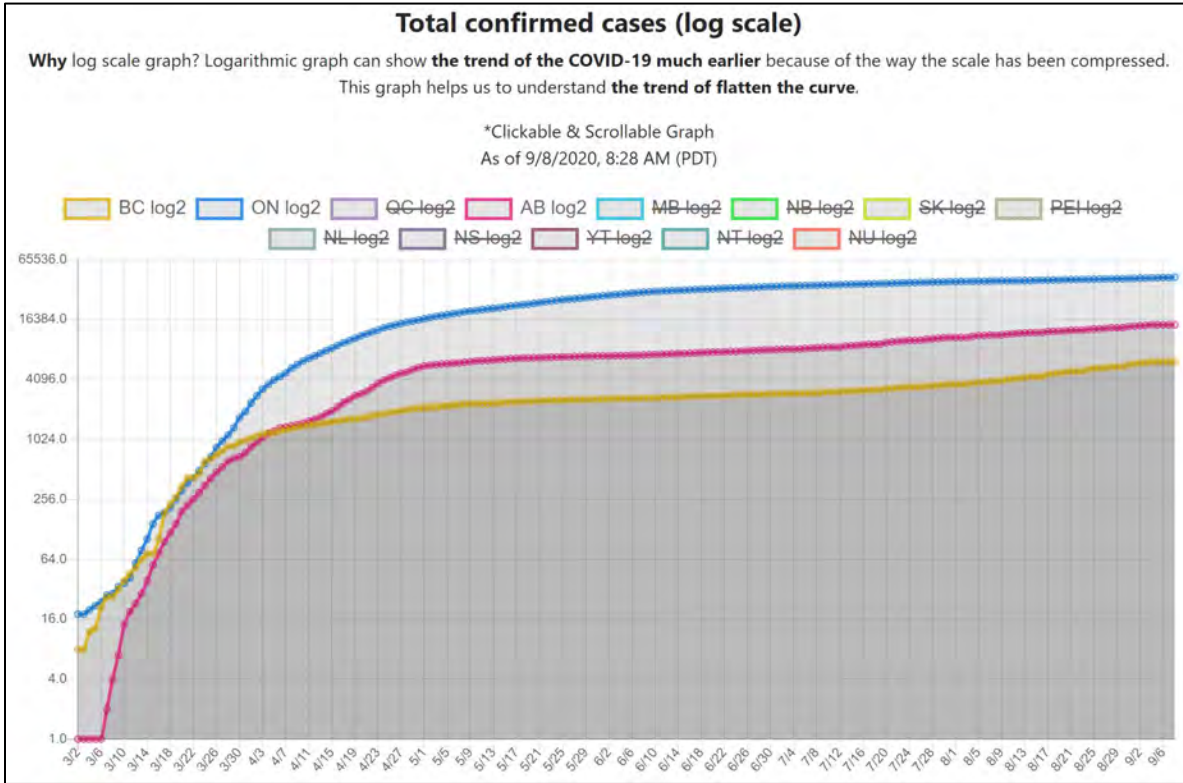
---

*Please submit feedback to:*

**Scott McGregor, CD, BCom**  
Intelligence Manager  
**Paladin Risk Solutions Inc.**  
C. 604-910-7781  
[smcgregor@paladinrisksolutions.com](mailto:smcgregor@paladinrisksolutions.com)



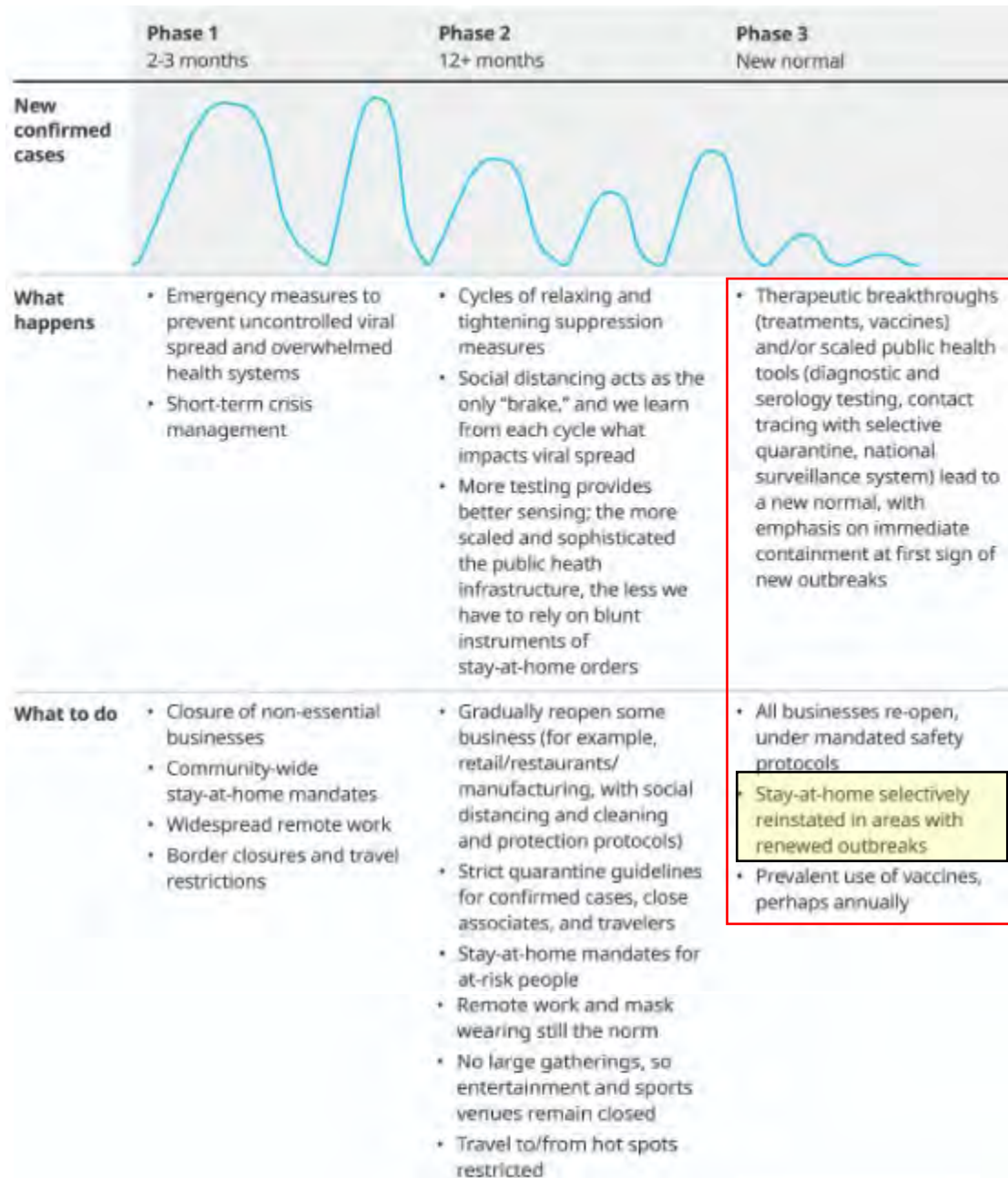
13. APPENDIX A – Canadian Tracking Information



Source: <https://www.covid-19canada.com/graphs>



14. APPENDIX B – Phase 1 to 3: Progression on Managing COVID-19 Pandemic



Source: <https://www.oliverwyman.com/our-expertise/insights/2020/apr/getting-back-to-work-responsibly.html>